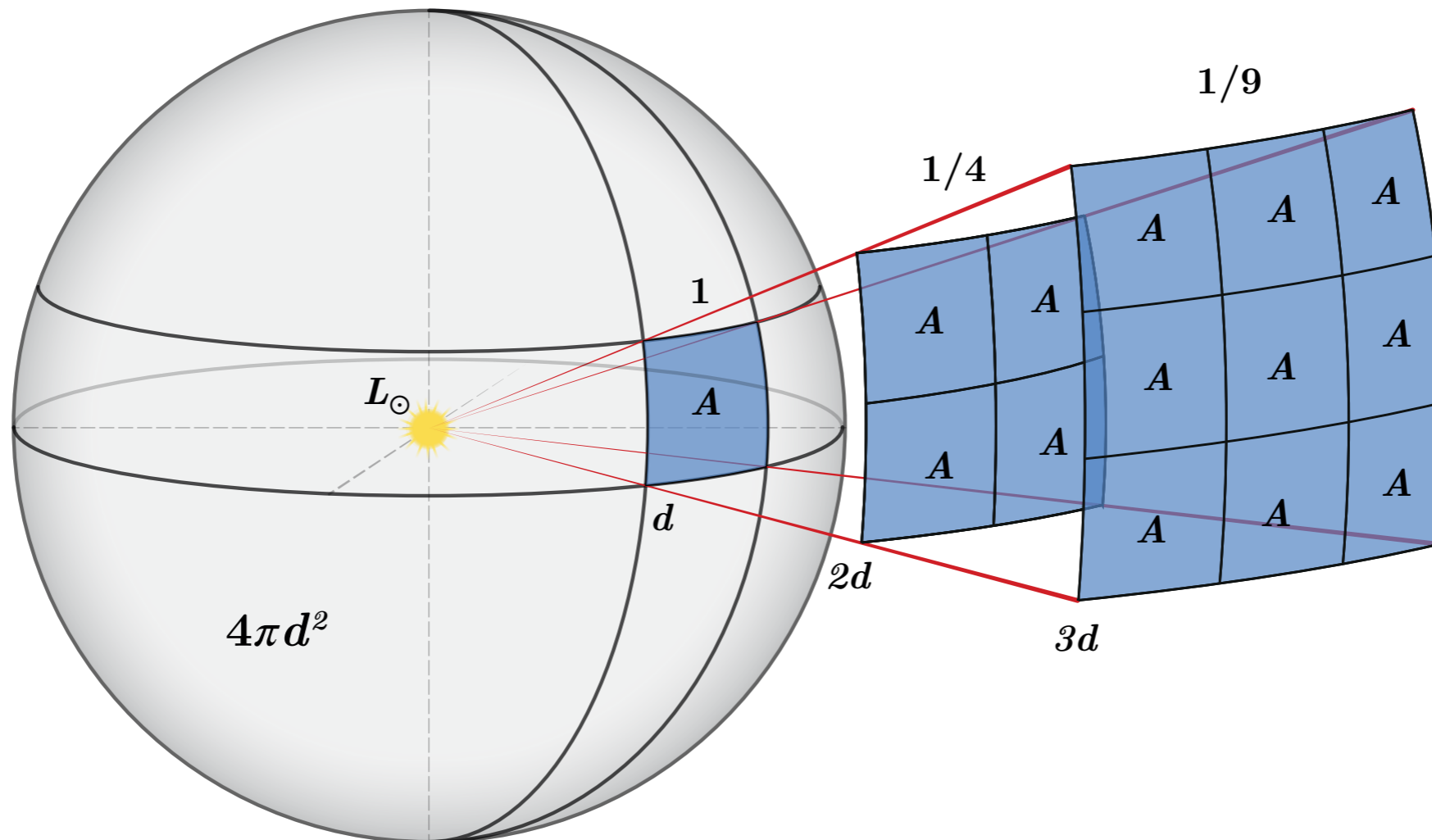


# Radiative Energy

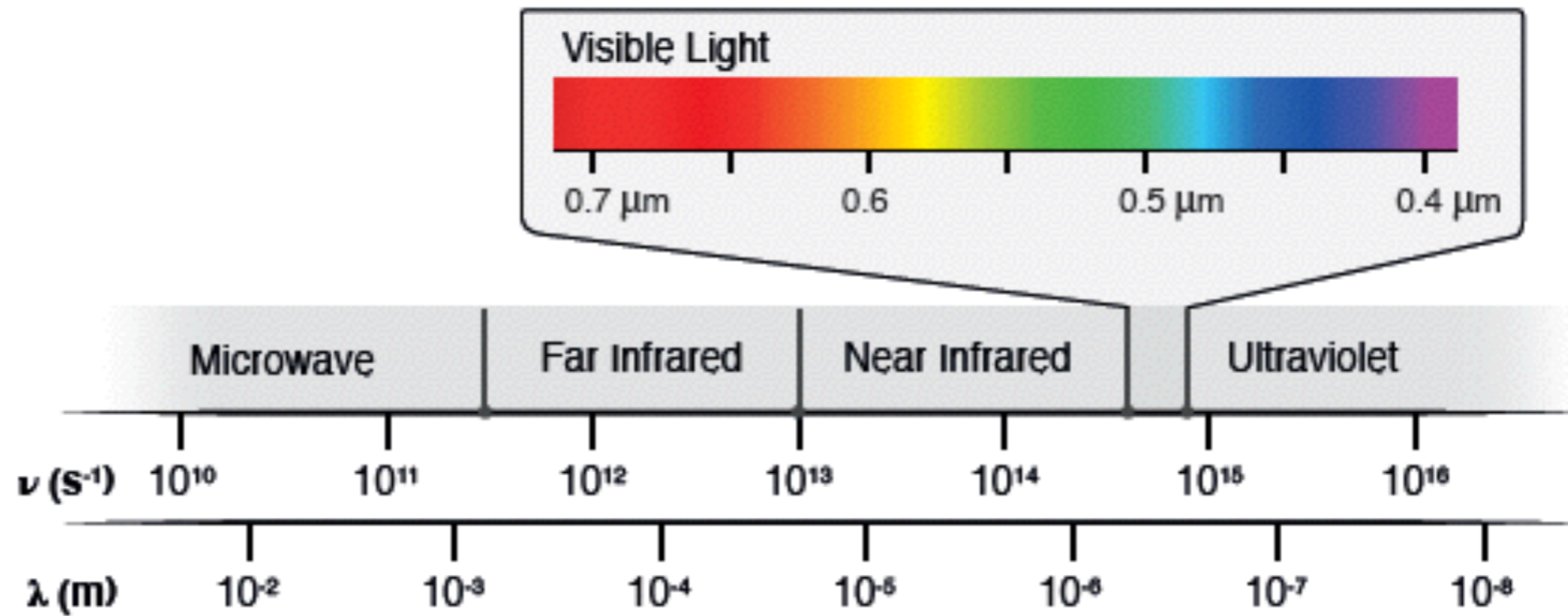
TABLE 2.1: Properties of the Sun

Luminosity $L_{\odot}$	$3.83 \times 10^{26}$ W
Mean radius $r_{\odot}$	$6.96 \times 10^8$ m
Mass	$1.99 \times 10^{30}$ kg
Effective temperature	5775 K
Mean distance from Earth $d_E$	$1.496 \times 10^{11}$ m

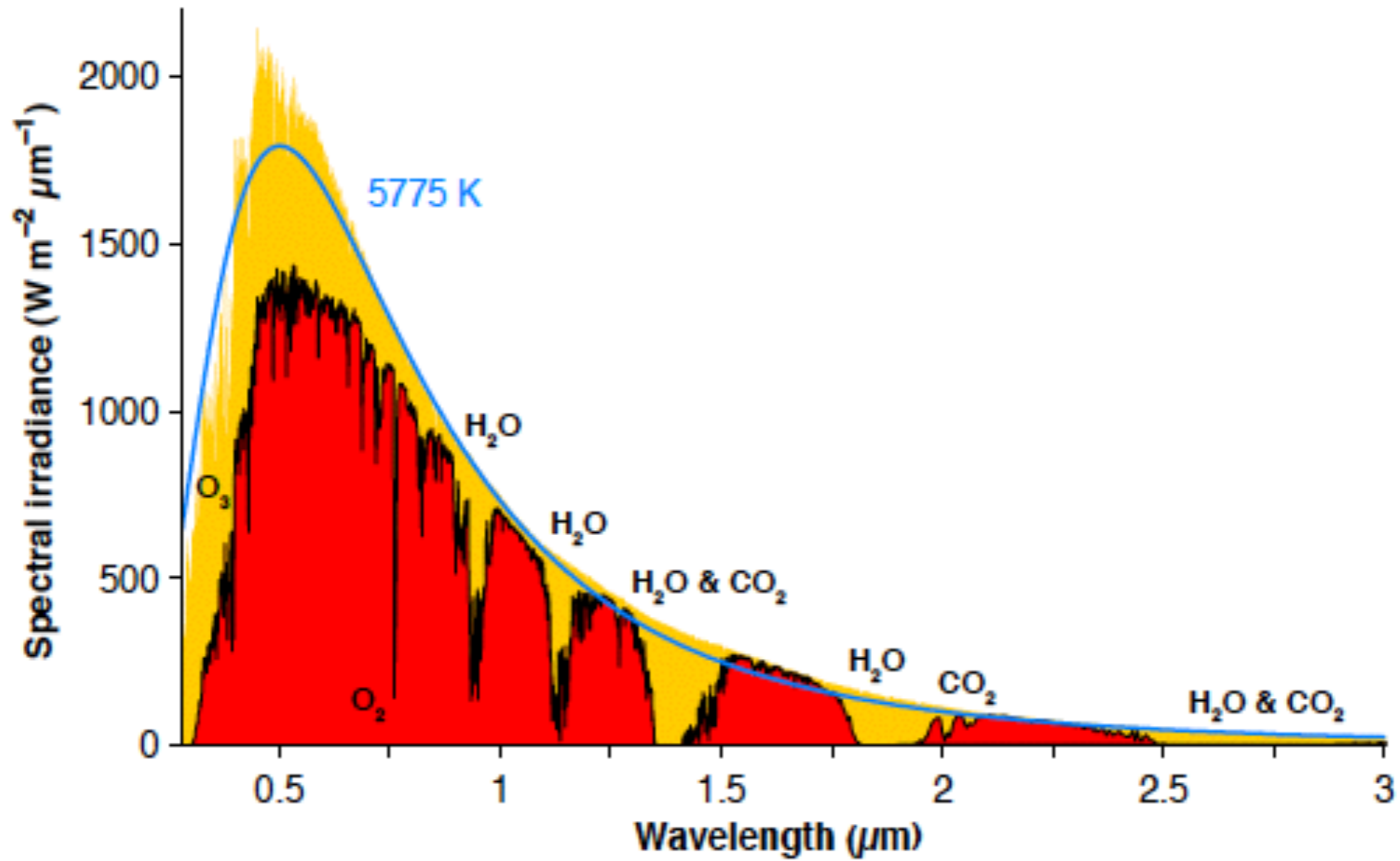
# Inverse square law



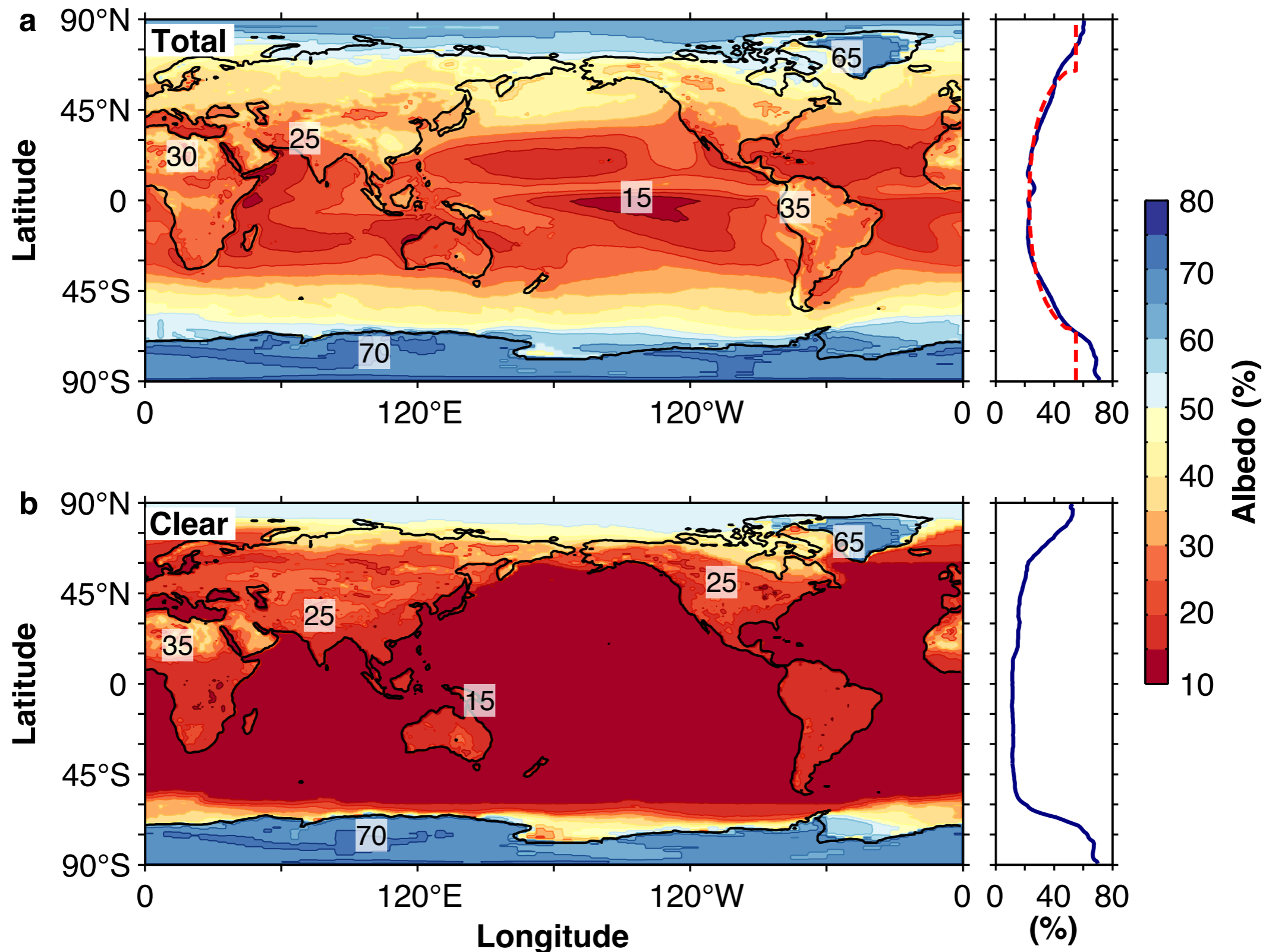
# EM spectrum



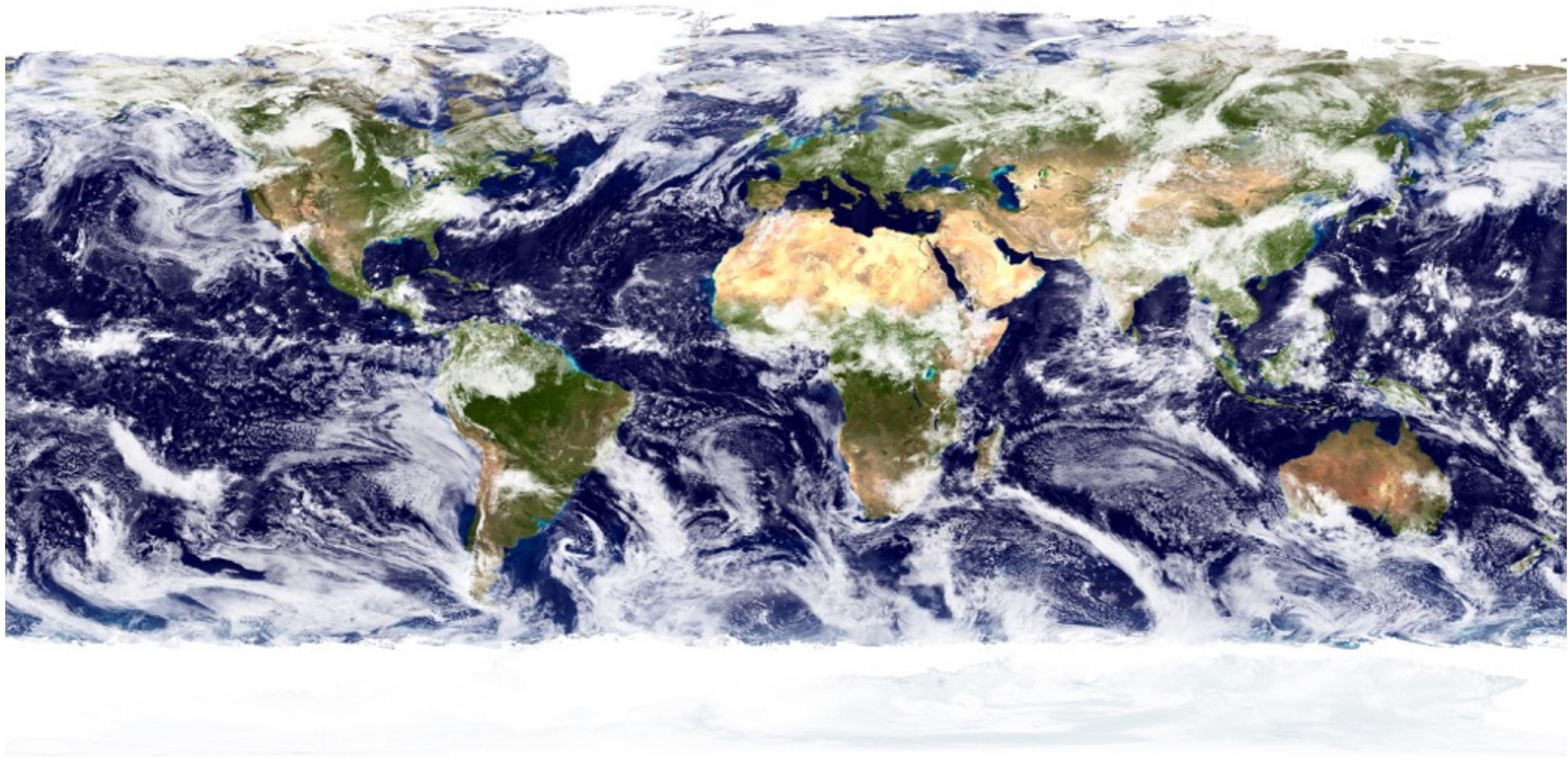
# Solar spectrum



# TOA albedo



# Visible Earth



(Image credit: NASA)

# Terrestrial spectrum

