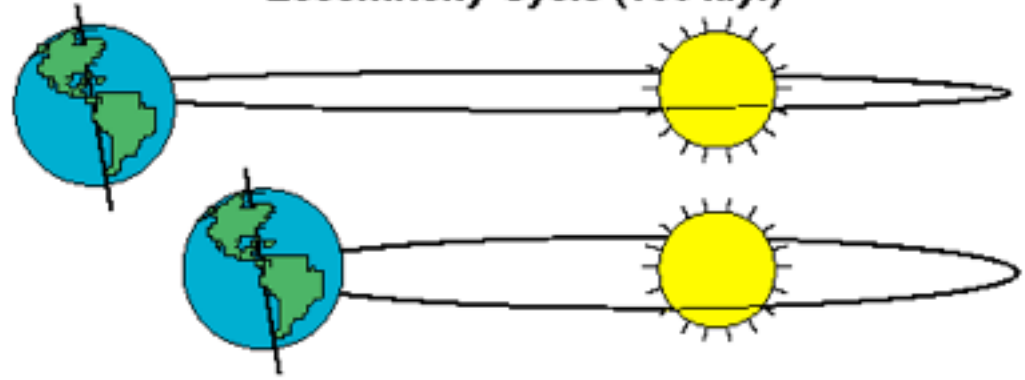
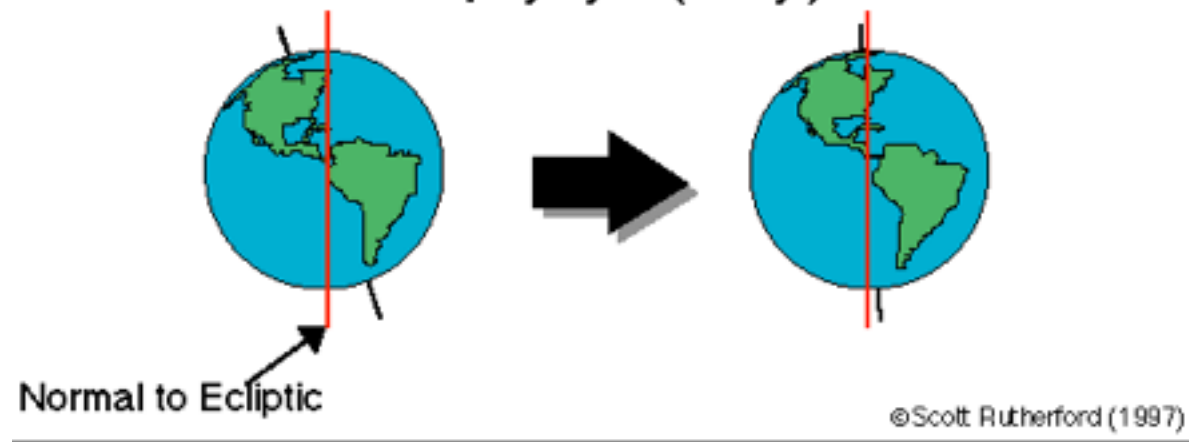


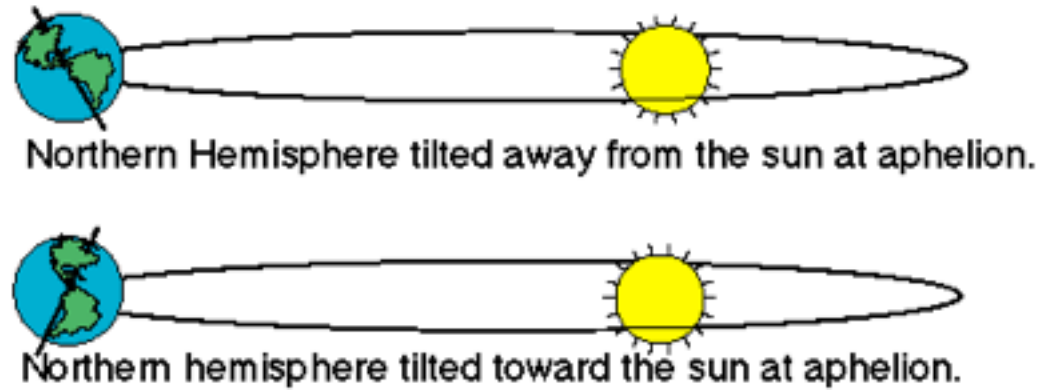
Eccentricity Cycle (100 k.y.)



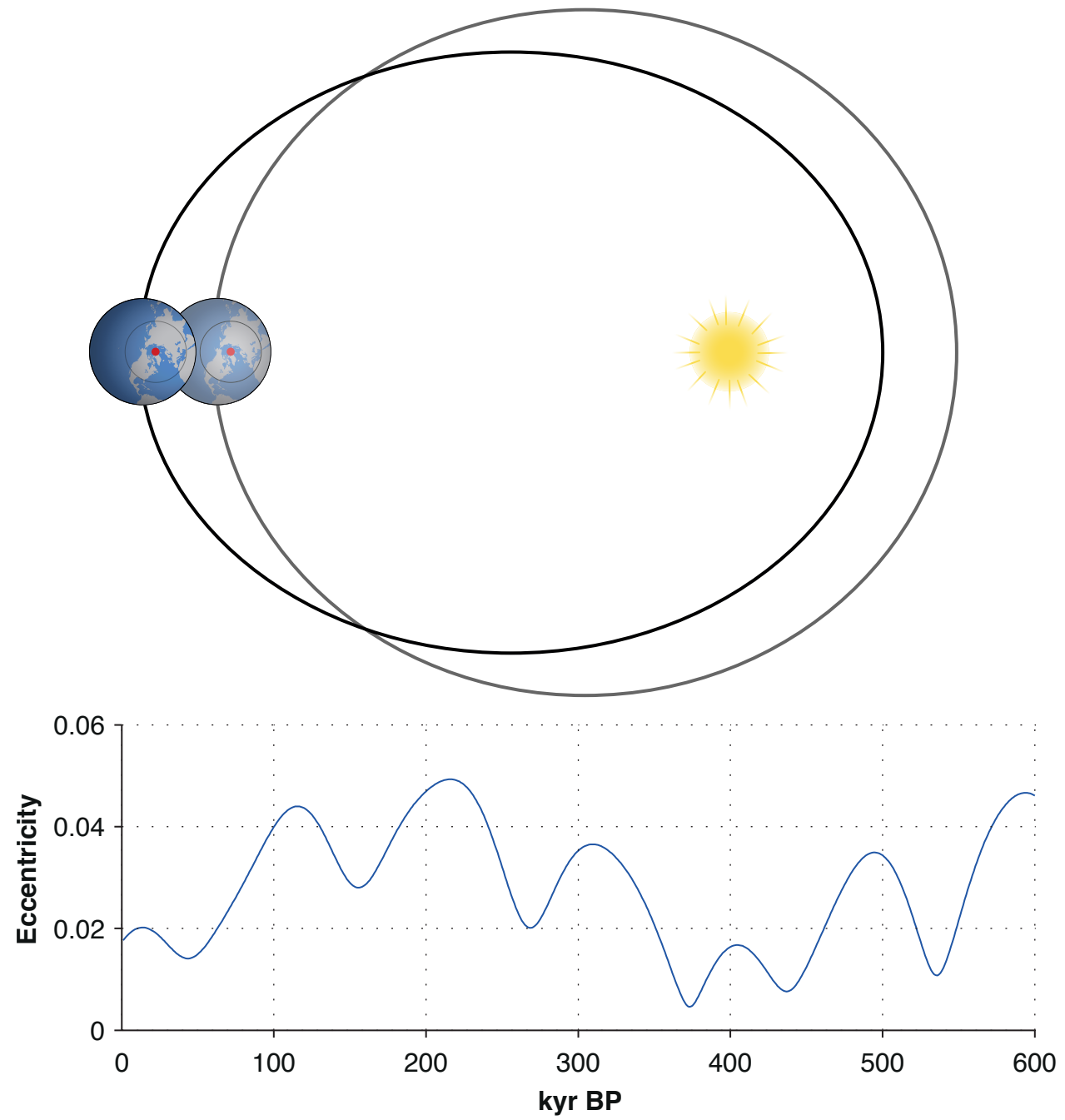
Obliquity Cycle (41 k.y.)



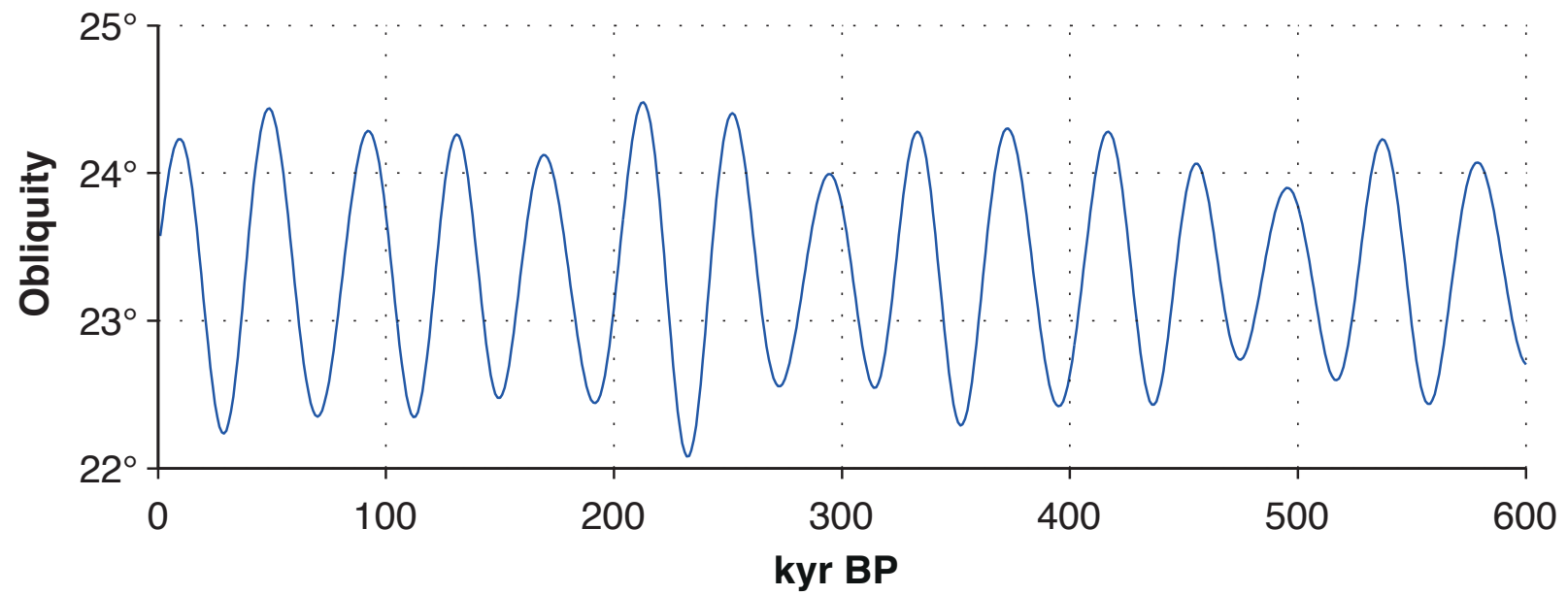
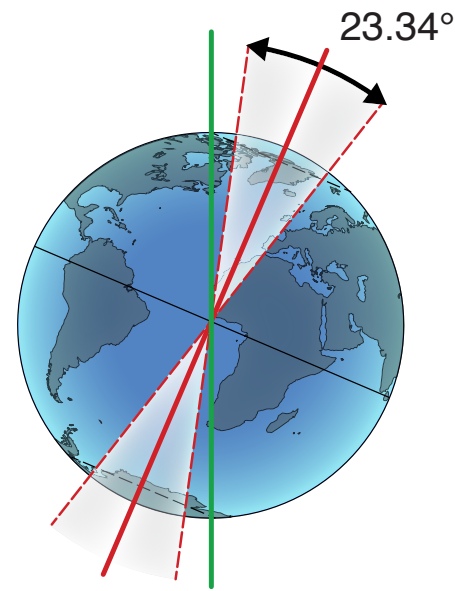
Precession of the Equinoxes (19 and 23 k.y.)



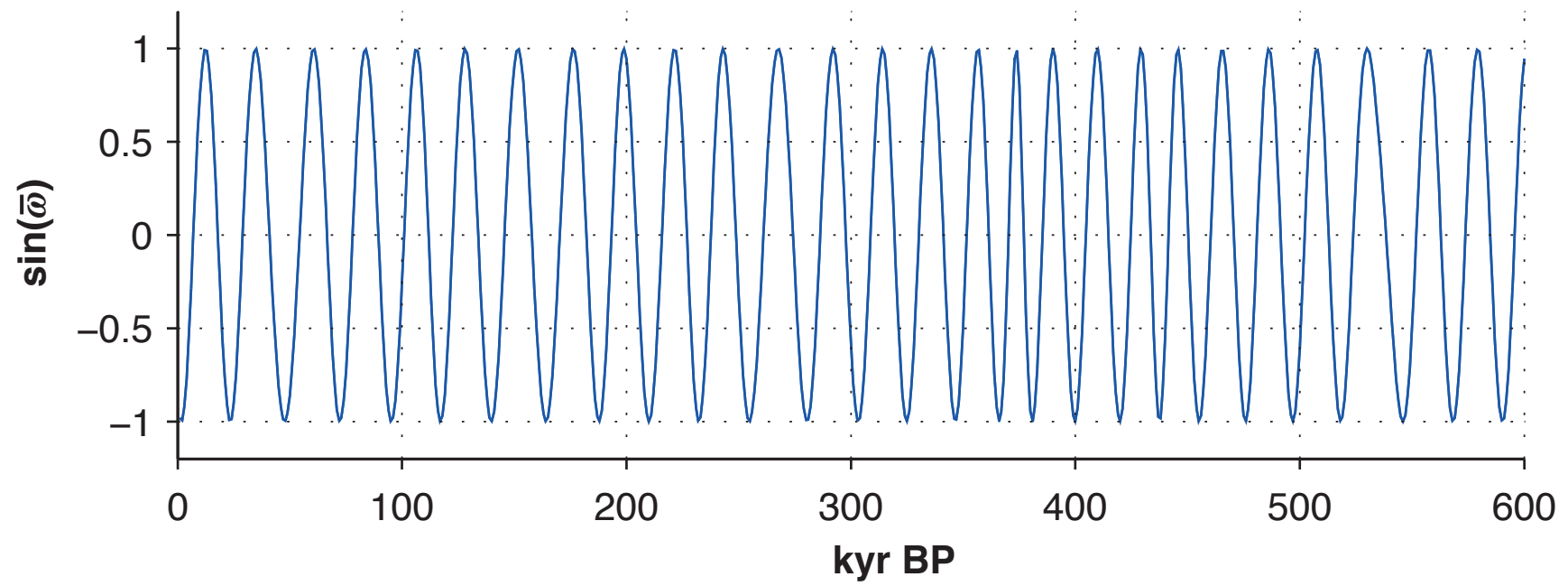
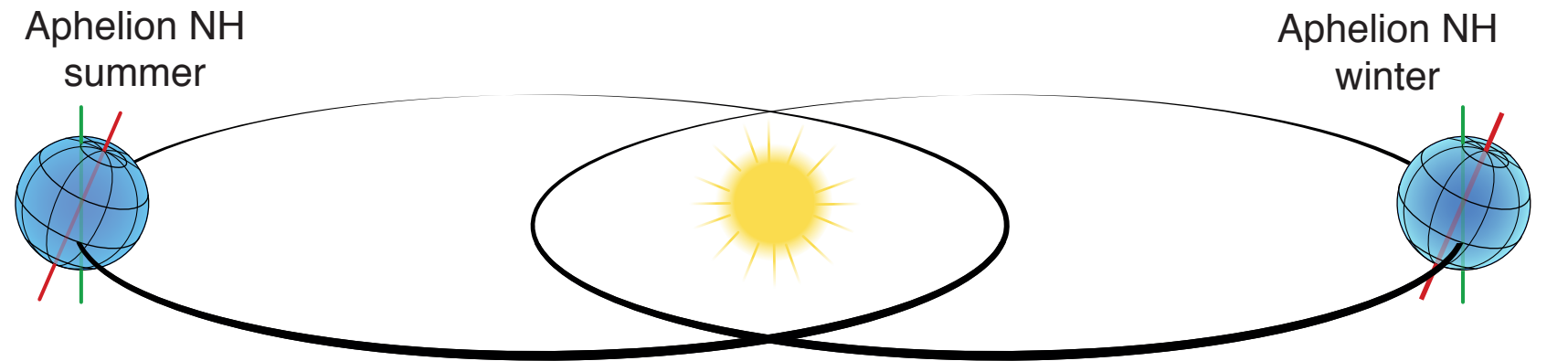
Eccentricity variations



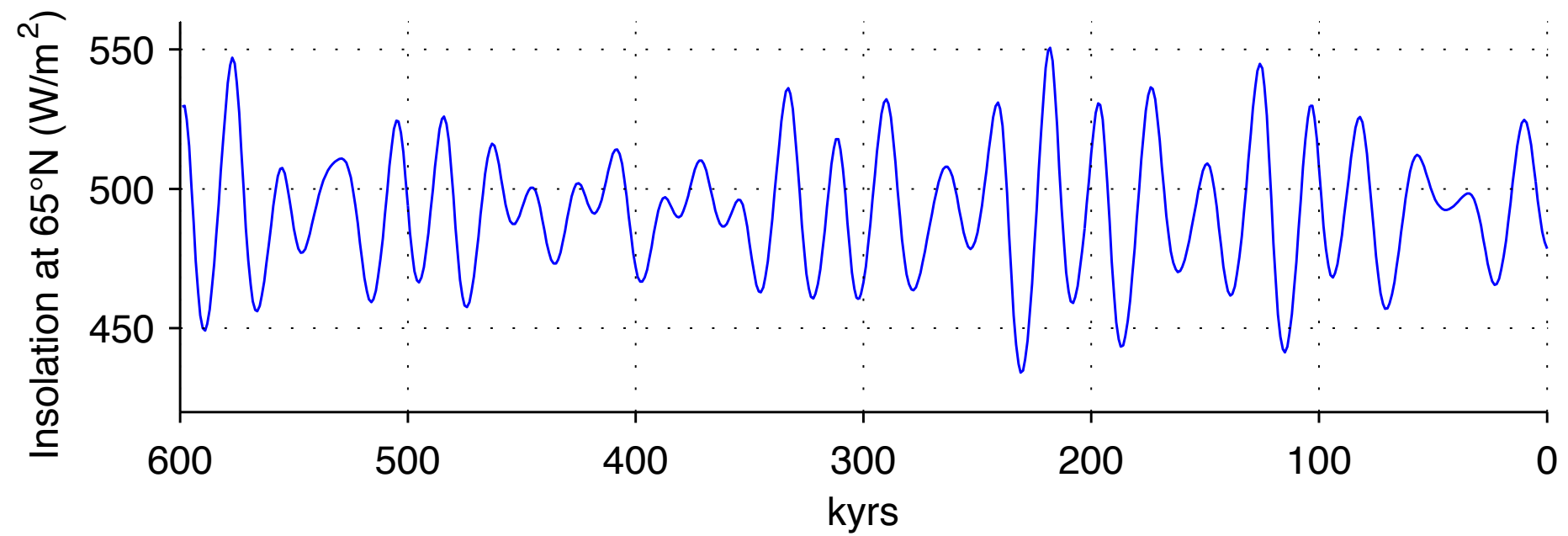
Obliquity variations



Precession

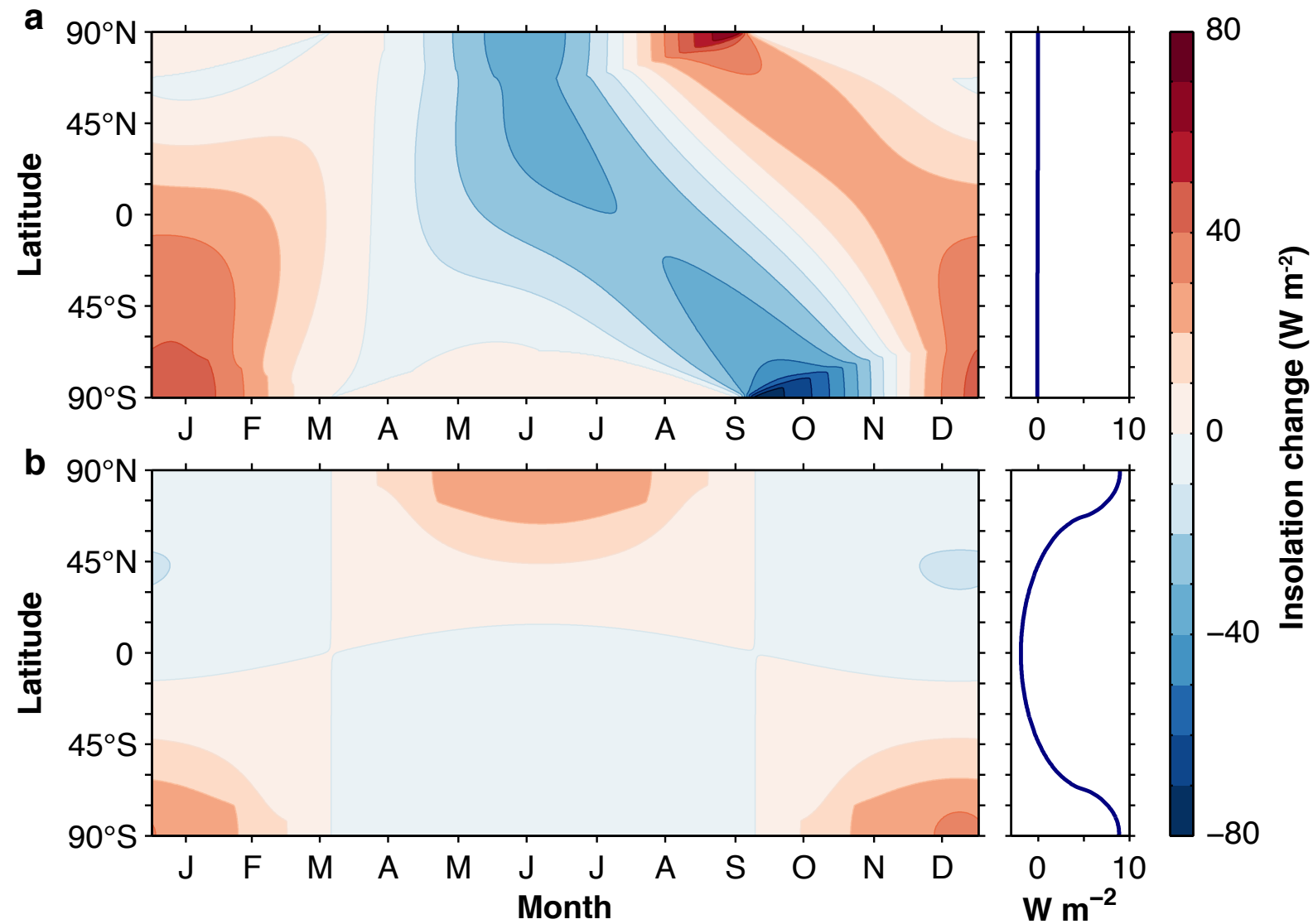


Insolation at 65°N at NSS



Source: Wikipedia

Insolation change



Precession
(180 degrees)

Obliquity
(22.1 degrees)